

Attestor Forensics

2023



Product
Guide

Who we are

We support the forensics community with innovative high-quality equipment to aid forensic analysis and investigation. We work directly with our customers to develop equipment from evidence development chambers to forensics light sources, and we produce all of our equipment right at our headquarters in Germany. We offer direct support to our customers in Germany and some of the surrounding areas, and ensure that our customers in other countries, both in and outside of Europe, are supported by our trained professional resellers and technicians. We serve customers in North America via our subsidiary branch, Attestor Forensics US Inc., located in Quakertown, PA.

Where we are

All of our products are designed and produced at our state-of-the-art facility in Bad Wurzach, Germany. Designed with the future in mind, our headquarters and production facilities in Bad Wurzach consider the environment and leave room for expansion.

For more info about our offices, visit our location in Bad Wurzach, Germany, or learn more about us by visiting our website online.



How to reach us

Attestor Forensics GmbH Headquarters

Zeppelinstr. 28,
88410 Bad Wurzach,
Germany

+49 (0)7564 949 14-0

attestor@attestor-forensics.com

www.attestor-forensics.com

Attestor Forensics Inc. US Sales & Service Branch

Quakertown, PA

+1 215-804-4092

US@attestor-forensics.com

www.attestor-forensics.com



Fingerprint Development

Equipment for the development of latent fingerprints at the lab or crime scene

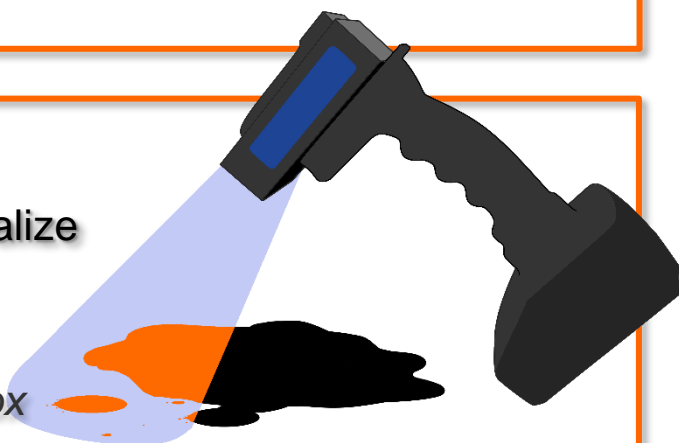
- *MEGAfume*
- *MOBIfume*
- *NINcha*
- *POWDERado*
- *MINIfume*
- *NINcha P31*



Evidence Examination

Equipment to search for and better visualize evidence at the lab or crime scene

- *LIGHTcube*
- *LIGHTcube Kits*
- *SCENEview*
- *LIGHTrail*
- *CONTROLbox*
- *LABview*



Evidence Photography & Documentation

Equipment for examining, photographing, and documenting evidence at the lab or crime scene

- *LIGHTcube*
- *LIGHTcube Kits*
- *SCENEview*
- *PHOTOvent*
- *EVIscreen*
- *LIGHTrail*
- *CONTROLbox*
- *LABview*
- *TORNado*



MEGAfume Series

cyanoacrylate fuming chamber series for developing latent fingerprints on non-porous surfaces

Basic Features:

- Exterior frame construction allows for 360° viewing and makes the glass and stainless-steel fuming chamber easy to clean
- Interior fuming chamber fixtures can easily be removed without any special tools
- Modular evidence rack system can be easily adjusted for smaller or larger pieces of evidence
- User-friendly multilingual color touch-screen interface
- Available in sizes S, M, and the new XL
- Comes with our forensic evidence fuming starter kit—everything you need to start fuming with your new MEGAfume chamber!



Optional Features:

- Addition barrel-mount firearm racks and rifle support brackets for fuming firearms
- Pin support system for bottles and cans
- Optional UV-C DNA decontamination unit
- Storage box for racks and accessories

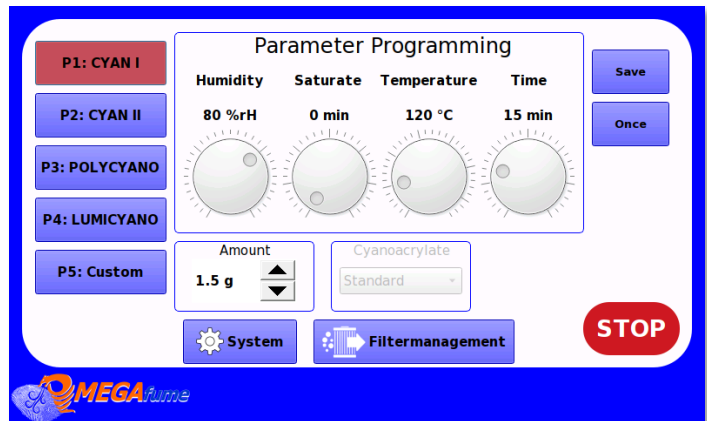
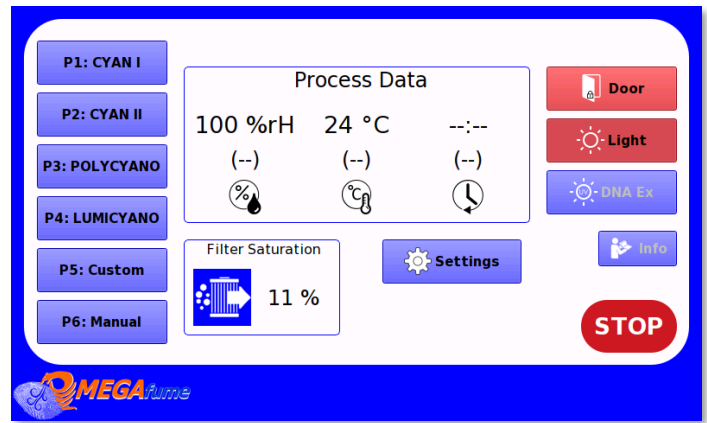


MEGAfume Control

modern user-friendly software lets you control your process from start to finish for a smoother workflow

Control Features

- One-touch pre-programmed cycles for common basic cyanoacrylate and fluorescent developers in liquid and powder form
- Custom and manual cycle options
- On-screen guided development cycles
- PIN-secured options to help prevent unauthorized access to evidence
- USB datalogger records all important cycle parameters during cycles for quality control and documentation
- Expanded filter management options let users specify the amount and type of developer they use, helping to get the most life out of every filter



Innovative Filter Management

filter management and monitoring features help you get the most out of your system

- Simple tool-less filter access for quick filter replacement and maintenance
- Advanced filter manager feature tracks the type and amount of developer used, displays the remaining filter life
- System safety lock feature to prevent further processes from being started when the filter is already saturated

New:

Refillable Filters:

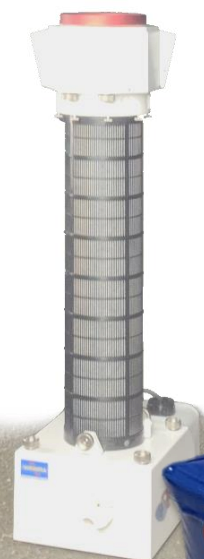
- Our systems now use new cost-effective and environmentally friendlier refillable activated carbon filter systems! These include a refillable filter sachet, dust filter, and dishwasher-safe filter frame.
- Our enclosed dust-free activated carbon filter cassettes are still available on request.

MOBIfume

portable cyanoacrylate fuming systems with wireless control for evidence fuming tents, and processing large spaces or items of evidence

Basic Features:

- Every basic kit includes a wireless control tablet and two complete fuming units
- Unit-interchangeable humidifier, vaporizer, and filter
- Durable and user-friendly touch screen tablet with multiple language options
- Fume spaces of 50-60 m³ with a single unit
- Wirelessly control up to 100 units from a single tablet to process spaces of any size or shape
- Convenient pre-programmed and custom cycle setting options
- Settings, including the developer type, humidity, and filter management can all be fully controlled by the user from the tablet
- Run fuming units individually or group them together
- Units come with sturdy and easy to clean tarpaulin carrying cases for easy assembly and transportation



Maximum Versatility:

- MOBIfume units can be used to process entire rooms at a crime scene, and they can also be used with fuming tents that can be placed over large pieces of evidence, such as vehicles. This allows users to fume bulky evidence right at the scene without having to dismantle it or move it to another location and risk damaging the evidence before it's even processed.
- MOBIfume units can be grouped together to operate under the same setting parameters. They can also be operated independently, all remotely from a single tablet controller. Not only does this eliminate the need for wired communication between the controller and the units, it means users can fume multiple spaces at once, even if the units in those spaces need different parameters.
- The ability to easily add more fuming units and manage them all from one tablet means the options for fuming spaces of different sizes and shapes are endless. Users can add or remove units, and adjust settings depending on their needs.



MOBIFUME BLACK EDITION

all the familiar features of our original model with specialized coating for easier developer cleanup

- Our sleek MOBIfume Black units come with a specialized coating that cyanoacrylate has difficulty sticking to, making cleaning and maintenance even easier.
- New units are backwards compatible with our older MOBIfume systems, including tablets, making upgrading or adding additional new fuming units easy and affordable.



Fuming Tent

optional easy-assembly portable fuming tent specially developed for use with MOBifume

Basic Features:

- Two-part easy setup fuming tent
- Evidence can be placed in the tent, or the tent can be lifted over larger pieces of evidence like vehicles and heavy equipment
- Use a half tent for a smaller fuming space or connect both halves for a larger space to fume many items at once
- Sturdy and wind-resistant construction
- Outer layer reflects sunlight to prevent the tent interior from becoming too hot, while the black interior is easy to clean and makes it easier to examine evidence using alternate light sources
- Each tent half comes packed in a heavy-duty bag for convenient storage and transportation
- Ground flaps and optional floor panel create a better floor seal and reduce outside moisture and air influx



MINIfume

the new portable cyanoacrylate fuming chamber for the development of latent fingerprints on non-porous surfaces

Basic Features:

- Full fuming system in a compact rolling case
- Stainless steel interior makes cleanup and decontamination between cycles easy
- Large durable glass viewing pane for evidence development observation
- Modular evidence rack system can be easily adjusted for smaller or larger items
- Integrated filtration system requires no additional external ventilation system hookups
- Laser-cut foam organizer for compact storing of parts and accessories
- Same intuitive MEGAfume series interface with pre-programmed and custom cycle options for use with both standard cyanoacrylate and one-step fluorescent developers
- Active filter monitoring system



Portable and Practical

- Rolling heavy-duty Pelican case keeps your portable fuming chamber safe during storage and transportation
- Control panel and all cords and fuming chamber accessories can be internally stowed in the laser-cut foam organizer

NINcha Series

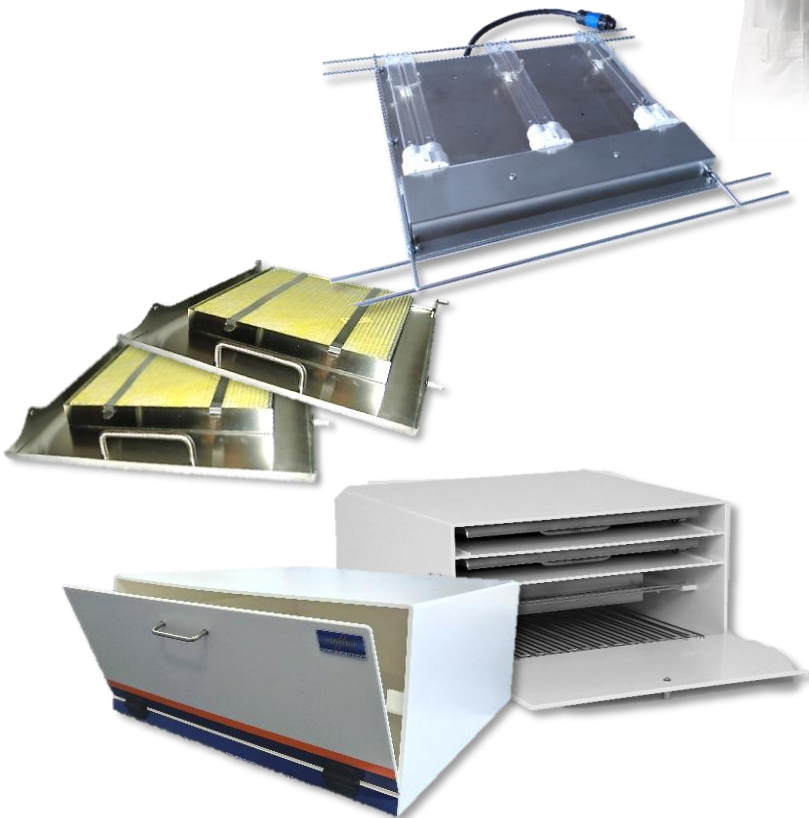
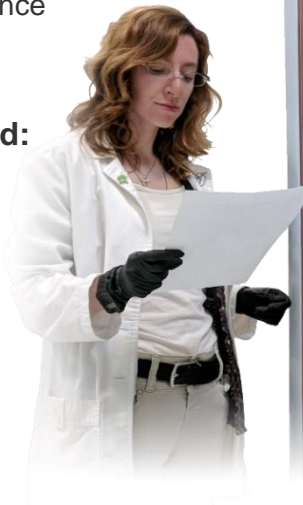
forensic climate chambers for developing porous evidence treated with NIN, IND, or DFO

Basic Features:

- Three sizes of standing laboratory models
- Pre-programmed cycles for NIN, DFO, and IND
- Custom cycle options with full parameter control
- Automatically detected NIN, IND, and DFO filters
- Temperature control range from 25 – 110°C
- Humidity control range from 40-80% rH
- USB datalogger for quality control documentation
- Low disturbance air cycling, preventing evidence movement and contamination during processing
- Active condensation control helps avoid moisture build-up and drips that could damage evidence
- Stainless steel interior for easy cleaning
- User-controlled interior lighting for evidence viewing during development

Always included with any model ordered:

- Ninhydrin filter unit
- USB-Datalogger feature
- External ventilation optional connection



Additional optional Features and useful accessories for your NINcha:

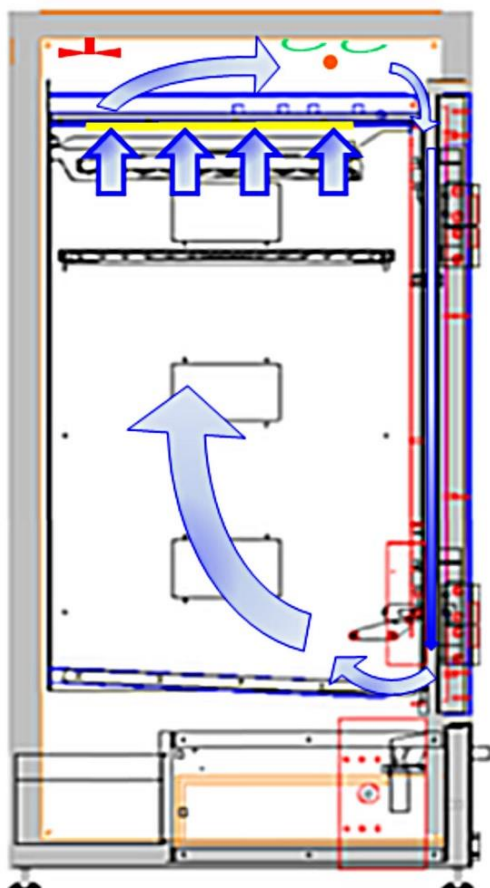
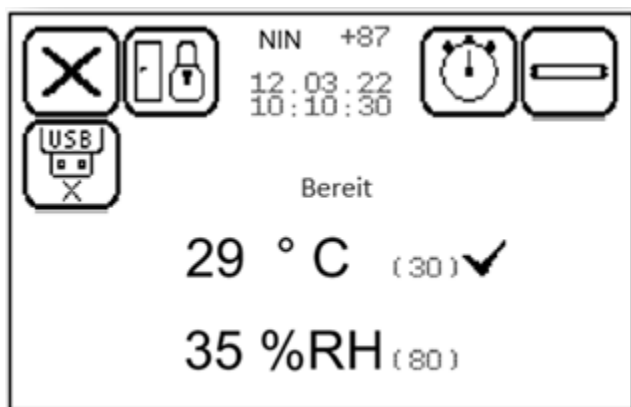
- DFO filter unit
- Indandione filter unit
- Removable UV-C decontamination unit for DNA contamination control
- Accessory storage box (pictured left, fits under our M31 model)
- Heavy duty laboratory trolley with additional shelving (for our S31 model)

NINcha System

The modern control system is user-friendly, and lets users easily monitor and select pre-programmed cycles or manually enter their own parameters.

System Features

- Touch screen displays cycle options and provides on-screen instructions
- Process timer has two alert modes for when a cycle is finished
- Active filter monitoring and on-screen filter life display
- Automatic shut-off when filter is fully saturated to help ensure quality evidence development and prevent contamination
- Door-secure setting during evidence development cycles
- USB-Datalogger records development parameters for quality documentation
- Automatically connects to the optional UV-C unit to provide a one-touch UV cycle



Circulation, Filtration & Ventilation

Our NINcha series was developed so our climate chambers could all be used as stand-alone units without needing any external ventilation connection. We also developed our chambers so that air is circulated throughout the chamber to evenly develop evidence, and is then directed through our filter system to remove dust and contaminants that may come from evidence in the chamber and prevent it from being deposited on other surfaces. To prevent evidence from being exposed to multiple developer types that may interfere with each other, we use a coded filter system. Each filter is coded to only be used for one type of developer (NIN, DFO, or IND) to help prevent damage to evidence.

For labs that require it for occupation health and safety, we also have an external ventilation hookup option. When using this hookup, the air in the chamber will be vented out at the end of a cycle, removing any warm damp air. Contact us for more information on external ventilation compatibility options.

NINcha P31

our mobile forensic climate chamber brings the lab to you so you can develop porous evidence without a laboratory

Basic Features:

- Fully functional development chamber
- Reliable controlled forensic evidence development outside the lab
- Evidence racks each sized to hold two A4 sheets at once
- Large glass condensation-resistant viewing window for monitoring evidence development in progress
- Stainless steel chamber and accessories are durable and easy to clean
- Integrated water tank can be easily removed for cleaning or refilling



System Highlights:

- Full system built into a durable rolling case for easy storage and transportation
- User-friendly control system, identical to our full-sized standing NINcha models
- Heated viewing pane prevents condensation buildup during development to prevent drips on evidence and ensures your evidence is always visible
- All accessories easily fit in the interior chamber for compact storage and transportation

POWDERado

our ergonomic height adjustable and benchtop
downdraft filter fingerprint powder workstations

Basic Features:

- Intuitive user-friendly touch screen interface
- Adjustable downdraft filter flow
- Ductless filtration venting system
- Integrated cold white LED illumination
- Durable and practical stainless-steel panel and work surface construction
- Clean closable storage for total containment during work interruptions or breaks



Optional Features:

- Optional adaptor and mounting system for LIGHTcubes to provide you with even more lighting options (including UV and royal blue for fluorescent powders)
- Electrically height adjustable pillar stand
- Rolling lab cart for a portable option with extra storage space



LIGHTcube

a practical modular forensic light source system for laboratory and crime scene use



Flexibility und Compatibility:

- Battery or corded operation
- Handle system for flexibility
- Screw adaptor for tripod connections
- Camera hot shoe adaptor for crime scene and laboratory photography
- Light rail adaptor system for laboratory workstations and copy stands
- Modules can be connected to and controlled by a superior system like the CONTROLbox
- compatible with SCENEview, LABview, and many other Attestor products for fast and easy alternate light source photography and evidence viewing

Key Features:

- Narrow range of light with one key wavelength per LIGHTcube
- Fanless design for easy cleaning and reduction of DNA contamination
- Wide variety of light color modules available, from UV to IR
- White light available in two different light temperatures
- Adjustable beam angles and beam widths available
- Modules of any color can be combined and used together
- Quick-release system for fast assembly and compatibility options
- Color-coded goggles and lenses for viewing and photography
- Custom camera filters available



Applications:

- Biological/ DNA evidence and body fluids
- Fingerprints
- Improved IR lighting for blood and GSR
- Document verification
- Textiles, hair, and fibers
- 3D prints and impressions
- Trace evidence



Available Colors	Useful Accessories
Daylight White 6500K	<ul style="list-style-type: none"> ■ Practical color-coded viewing and safety goggles ■ Matching camera filters available in a range of sizes with threaded and magnetic attachment options ■ Multiple handgrip and power supply options ■ Additional fully customized kits available on request
Neutral White 5000K	
IR 850nm	
Red 630nm	
Orange 590nm	
Pure Green 530nm	
Cyan 505nm	
Blue-Green 470nm	
Royal Blue 447nm	
Violet 410nm	
UV 365nm	



LIGHTcube Kits

our modules and accessories can be ordered individually, but we also offer kits with a variety of pre-selected equipment, chosen for specific applications

Crime Scene Kits:

- Specifically selected to include the light source equipment you need most at a crime scene
- These kits include light sources commonly used to examine scenes and evidence with a bright white light, and light source options for examining some other frequently encountered evidence like fibers and body fluids.
- For those who expect to often search for biological evidence, we recommend the biological evidence LIGHTcube kits.



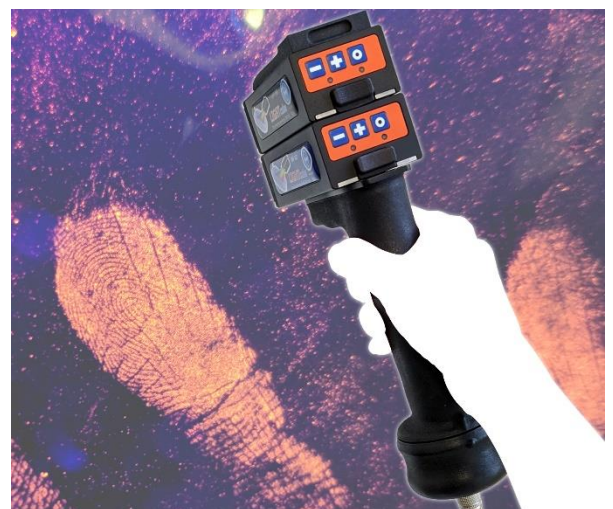
DNA/ Biological Evidence Kits:

- Biological evidence is often encountered at crime scenes and is often present on evidence that arrives at the lab. These kits will provide you with the most practical light sources for working with it.
- These kits include a variety of light sources useful in searching for and examining biological evidence such as semen, blood, urine, bone fragments, hair, and fibers. They can also be used to enhance the appearance of wounds, such as bite marks, lacerations, and bruising, and help differentiate blood spatter from insect artifacts such as fly spots.



Fingerprint Kits:

- Fingerprints are one of the most commonly collected types of evidence. Not only will this kit supply you with light sources to help you find prints, you will receive additional light sources ideal for examining prints that have been processed.
- These kits include a variety of colors that can be used to enhance contrast to change the appearance of shadows, make evidence lighter or darker against a background, or cause prints and other evidence to fluoresce, making it easier to examine and photograph.



Custom Kits:

- Don't see what you're looking for? We can modify existing kits or help you put together a custom kit specifically for your needs.



LIGHTrail

the mounting system for *LIGHTcubes*

LIGHTrail is a laboratory mounting system for our LIGHTcube modular light source series. This system consists of two parallel rail systems with bus connections for our light sources and compatible equipment.

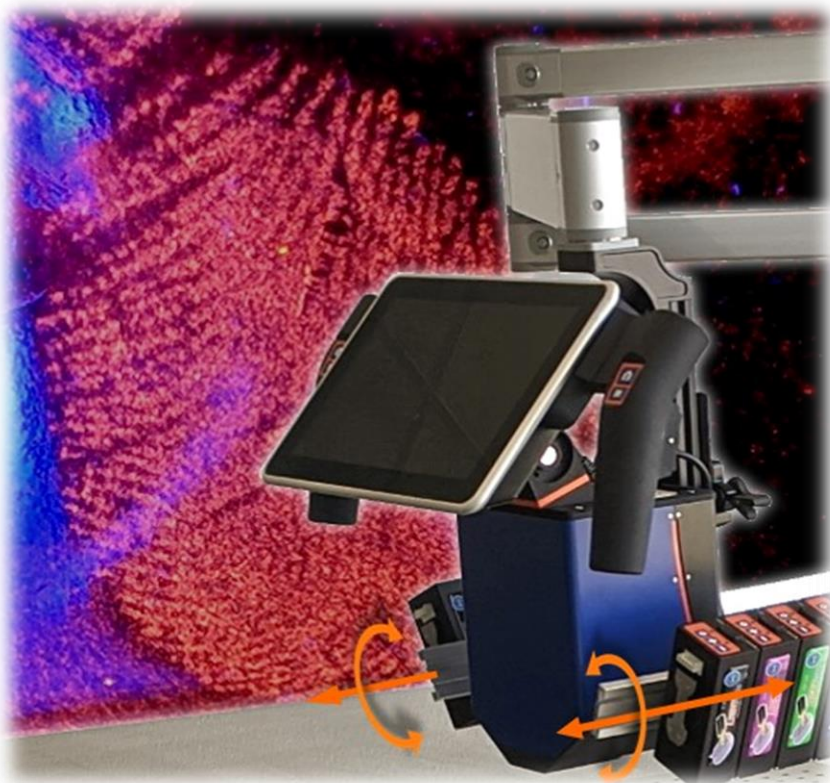
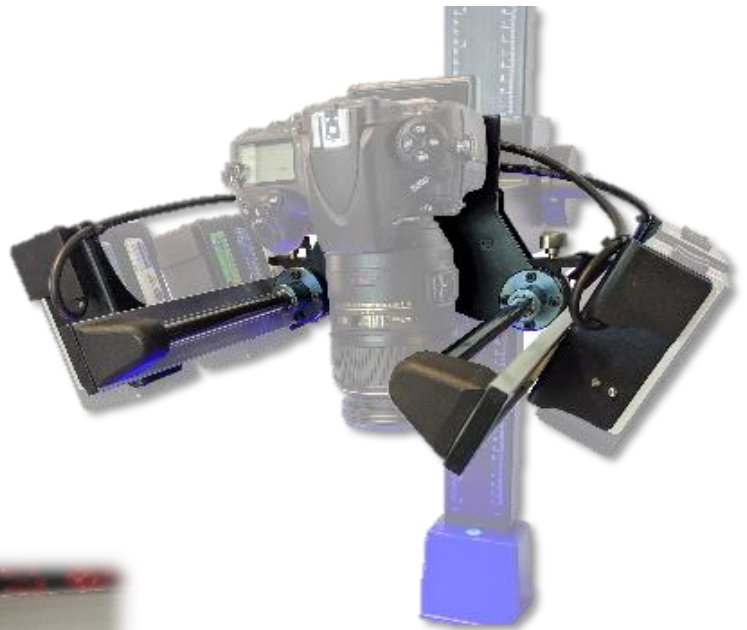
LIGHTrail is available in BASIC (pictured above) and PRO (right) models. Either version can be attached to a copy stand, PHOTOvent, or LABview system.

BASIC Version:

- LIGHTcube bus system allows for a group of up to 4 modules to be connected and adjusted on each 20 cm long rail
- LIGHTcubes are automatically supplied with power when connected

PRO Version:

- Two LIGHTcube module bus connections on each side, creating four total LIGHTcube sections for greater flexibility
- LIGHTcube sections can be moved along the rail system and adjusted in angle to better illuminate evidence
- 50 cm long rails can easily hold up to 8 modules on each side



Each light module can be quickly and easily attached to the rail system and can then be adjusted in angle and position for the best lighting option for viewing and photographing your evidence. Connecting a LIGHTcube to the system automatically connects it to power. Any combination of modules can be used at once and adding our CONTROLbox makes adjusting and saving lighting settings even easier.

LABview, which comes equipped with the BASIC rail system by default, can also be upgraded to our PRO version, and is compatible with all LIGHTcube modules, including IR.

CONTROLbox

the multifunction CONTROLbox system gives you full control over LIGHTcubes and more

With CONTROLbox BASIC and PRO, not only can LIGHTcubes be manually controlled via their individual back control panels, you can control all your modules at once, mix colors, and even save your settings for later.

BASIC:

- Multilingual 7" color touch-screen display
- Turn all of your light sources on, off, or adjust their intensity
- Mix and use different combinations of light colors for different applications
- Compatible with all LIGHTcube types
- Control system with three connections
- Optional upgrades if more connections are needed



PRO:

- All the functions included with the BASIC version
- Additional advanced features let you further control your light sources and even save lighting settings and combinations for later use
- Dial control option for adjustment in addition to the touch screen control
- Connect our PRO version to workstations and camera columns like PHOTOvent and EVIscreen, and easily adjust the fan strength of your ventilation system, use our filter management system to monitor your filter saturation, and adjust your workstation height

LABview

the laboratory evidence video
and photography system



Features:

- Powerful VIS and IR camera with low-light sensitivity
- View, film, and photograph evidence like GSR, bloodstains, body fluids, trace evidence, fingerprints, and other evidence easily with one system
- Integrated automatic filter wheel and custom and automatic setting options
- BASIC Version with 6 MPix and PRO Version with 10 MPix VIS and IR camera options and zoom functions
- VIS- and IR-only LV700 model, and LV800 model, with our light amplifying camera for better detection of chemoluminescent reagents like Luminol

- Autofocus for stable control and imaging
- One-click photo and video controls
- No need for an external PC
- Advanced options for control

Optional Available Features:

- Customizable light options with our LIGHTcubes
- Residual light amplifier (from our SCENEview series) for better visualization of evidence treated with Luminol and similar developers (included with LV800)
- Connections to external monitors
- Customizable mounting options available for different workstations like EVIScreen and PHOTOvent





SCENEview

our innovative image and video recording camera system series for crime scene evidence examination

Basic Features:

- VIS/IR camera with light configuration for blood and GSR
- Liveview screen with high frame rate, well-suited for searching for evidence at scenes
- Manual and autofocus
- Integrated control system with one-touch snapshot and video recording—no external PC required
- USB file transfer capability
- DNA-safe fanless design

Customizable Feature and Accessories:

- BASIC Version with 5 MPix and PRO Version with 10 MPix VIS and IR camera options
- VIS- and IR-only models, SV700 and SV800, specially developed with a light amplification camera feature to increase sensitivity and better detect chemoluminescent reagents
- Specialized filter to enhance light-producing reagents like Luminol, Bluestar®, Lumiscene®, Hemascein® and Fluorescein® used for blood detection
- Further expansion options for looking for evidence using LIGHTcubes and their filters
- Red light adaptation feature for safer navigation at darkened scenes
- Mains power outlet cord or portable power supply
- Basic and advanced remote control options
- Tripod option for stable snapshot and video recording
- HDMI or wireless file transfer for training and documentation purposes
- Heavy-duty crime scene case, or lined travel bag for safe storage and transportation
- Custom LABkit and SCENEkit bundle options



PHOTOvent

the modern solution for a safer and cleaner
downdraft filter photography workstation

Basic Features:

- Motorized camera arm for coarse and fine positioning, ideal for height-dependent focus camera systems
- Shelf attachment with cable chain and power connections for light sources and other accessories
- Stainless-steel height-adjustable work surface option for easy cleaning and decontamination
- Strong downdraft airstream system with five strength levels and a ductless filtration system to reduce odors, dust, and other particulates
- Two-phase filter system with convenient monitoring
- Tool-less filter access for easy maintenance
- Two size options

Optional and Alternative Features:

- Universal mounting frame for common user-sourced photography equipment
- Upgrade options for our LIGHTrail and LIGHTcube forensic light sources
- Additional work surface options with or without scales in matte black or white



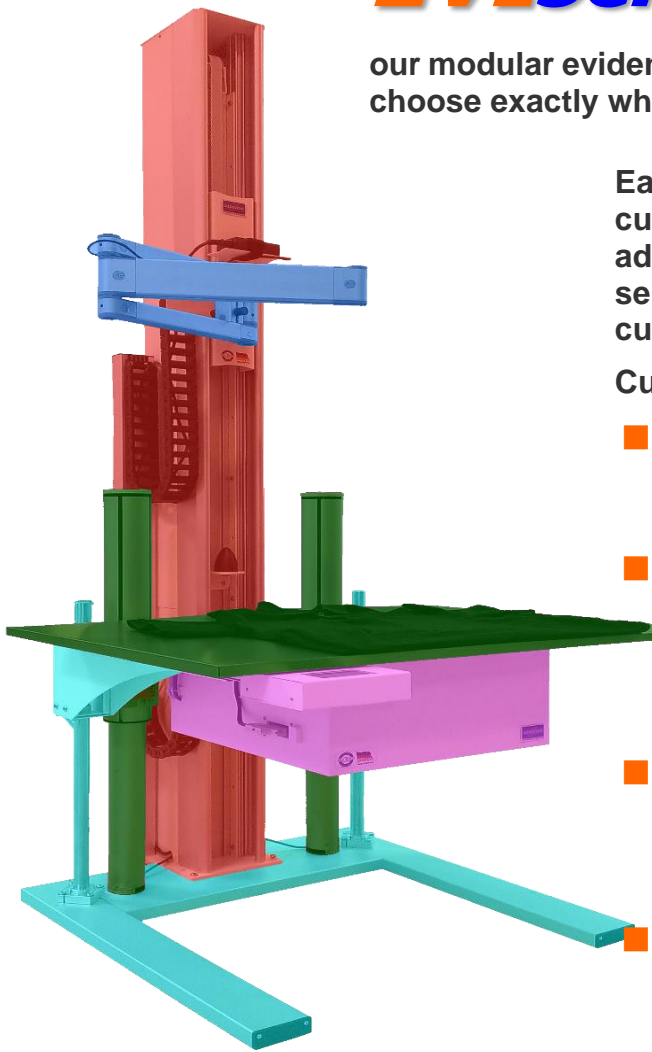
EVIscreen

our modular evidence screening system lets you choose exactly what features suit your needs

Each highlighted section on the left represents a customizable section. Different sections can be added to the main camera column so you can select exactly what you need for a completely customized workstation build

Customization Options:

- **Main camera column:** manual or electrically assisted height adjustment options. Can be fixed to a workstation base, or desktop
- **Camera arm:** Simple fixed camera mount, or segmented camera arm for greater camera mobility. Fully compatible with off-the-shelf photography systems, as well as our own camera systems like LABview
- **Working surface platform:** Fixed height, or height adjustable, stainless steel or epoxy-coated options, available in two sizes. Also available with no work surface platform
- **Work surface:** Optional ductless ventilation system supplies 5-level downdraft filtration, reducing odor and particulates from the work surface for a safe work environment
- **Workstation base:** Fixed base or height adjustable base options. Rolling lab rack for greater portability also available.
- Compatibility options for use with our full range of LIGHTcube forensic light sources



TORnado

a practical and containable toner and ozone reduction system for electrostatic detection of handwriting on documents



Basic Features:

- Three-stage integrated ductless filtration system and horizontal work surface airstream, independent of external ventilation
- Ductless filtration system to remove particulates from the workspace starts automatically when any panels are opened and can be adjusted in strength
- Adjustable mounting space for your ESD (contact us for compatible model information)
- Integrated power connections for your ESD
- Holding tray for corona and additional storage space for tools and developers
- Simple touch screen display with filter monitoring for easy control and maintenance
- Closable panels provide safe dust-free storage of your ESD, accessories, and evidence being processed during work interruptions
- Catch tray for collection of leftover toner beads can easily be pulled out without moving any heavy equipment, making cleanup safer and easier
- Integrated cold white LED illumination

Optional Features:

- Optional motorized height adjustable base
- Universal heavy-duty laboratory trolley with extra shelving space for storage



Custom Designs

Forensic science is still a fairly new industry and new techniques are always being developed. We're used to thinking on our feet and working with you to design products that are exactly what you need. Your feedback helps us develop new innovative products.

Would you like us to modify one of our products to your particular needs? Are you interested in a custom designed professionally produced instrument or tool? Have a unique product idea and need a competent partner? Contact us!

Service Contracts & Extended Warranties

We know that the best service means more than a quick safety and function test. With Attestor Forensics is a strong reliable partner, both when it comes to helping you purchase the equipment you need, and when it comes to the repair and maintenance of that equipment.

We provide technical services directly and via competent partners who undergo regular service training.

A maintenance contract with regular service visits ensures optimal equipment performance and keeps your systems up to date with the newest software features.

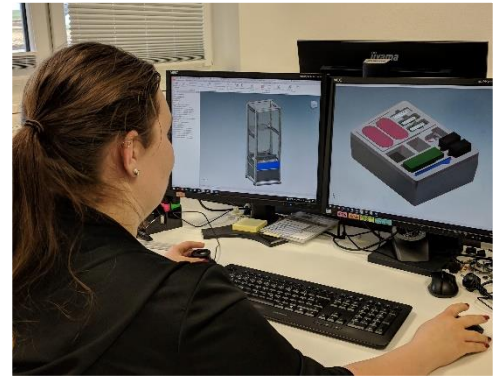
Documentation for your QA system and conformity with your legal requirements under ISO 17025 will be guaranteed, helping you stay ahead of the game when it comes to compliance for laboratory accreditation.

We offer three service plans options in addition to our regular repair service:

- Regular inspection and calibration service
- Contracts that include travel and labor costs to minimize unexpected costs to you
- Extended warranty options covering travel, labor, and parts replacement in case of part failure

Training Seminars

Knowing how to use it is just as important as having the right equipment! We offer installation and user introduction training for all of our products, letting users get to know our products before they have to use them in the field or the laboratory. We even offer training completely independent of a purchase, so you can learn more about equipment and decide if it is right before you make any purchase. Training can take place on site at your facility or at our site in Bad Wurzach, Germany. All equipment training sessions are led by experienced instructors who work with us directly.



About Our Company

Since our first steps into the market of forensic technology in 2000, we've been active in consulting, sales, service, and the development of new innovative forensic technologies. We set out with a small handful of enthusiastic dedicated colleagues and a goal to do something different. We wanted to create a company with values that focus on long-term partnerships with our customers, high quality, and security all come before quick returns and contract conclusions. **We connect and work directly with our customers as partners.**



About Our Philosophy

Customer Relations: We believe in a customer-centered approach and direct communication. When you contact us for support, you won't speak to someone at an anonymous call center, but to competent professionals right here at Attestor. Our team is here to help you, with no time restrictions, sales or commission pressure. Every aspect of our business aims for satisfying long-term customer relations. We believe that making lasting strong support connections with our customers is more important than quick project business. Feedback from our customers helps us stay in the lead, enabling us to produce the best products on the market, specially designed to meet customer needs.

Quality: Since 2009, we've operated and produced our equipment using the high standards for ISO 9001 quality management. We take a practical approach when designing our products, focusing on persistent quality and innovation. We strive to bring you the best quality and service so you can have access to leading forensic technology that always exceeds your expectations and ensure that our high standards result in visible impressive results. We also offer many options that allow you to retrofit and upgrade equipment with minimal hassle, making our systems a better long-term investment, keeping you in the technological lead. Our team is committed to providing you with the best support possible. We want to surpass your expectations and help you achieve your goals.



About Our Customers

Forensic laboratories around the world count on us as a reliable provider of forensic science equipment. We work with law enforcement organizations, research institutes, private laboratories, customs, banks, insurance companies, airlines, and universities in countries throughout the world. In addition to superior products and assistance with project advice, our customers benefit from long-term after-sales services, ranging from equipment installation and training, to service and repairs.

Our Locations



Map Data © 2015 GeoBasis-DE/BKG (© 2009) Google



Attestor Forensics GmbH

Headquarters

Zeppelinstr. 28,
88410 Bad Wurzach,
Germany



+49 (0)7564 949 14-0



attestor@attestor-forensics.com

www.attestor-forensics.com



Attestor in North America

Attestor Forensics US Inc. US Sales & Service Branch

Quakertown,
Pennsylvania,
USA

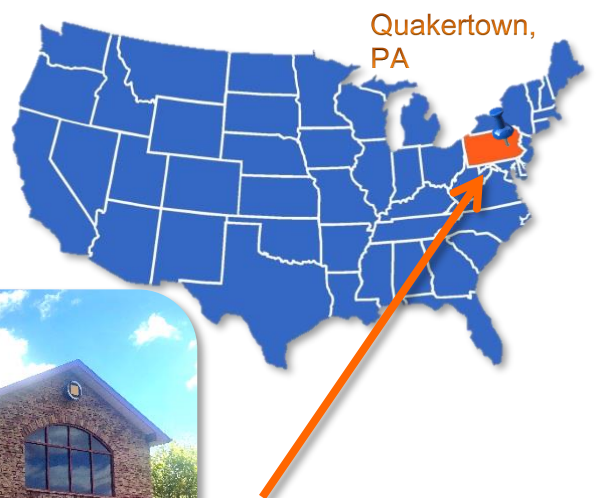


+1 215 – 804 – 4092



us@attestor-forensics.com

www.attestor-forensics.com



Attestor Forensics